

## Annex 11: ICM Process maps

### Update to be approved by High Level Group: RNE/RFC & TM & S&TT

Version	Approved by	Date of approval
1.0	RNE General Assembly	May 2021

#### Process maps for international contingency management

The graphical presentation of the processes described within the ICM handbook can be found in the process maps included in this Annex.

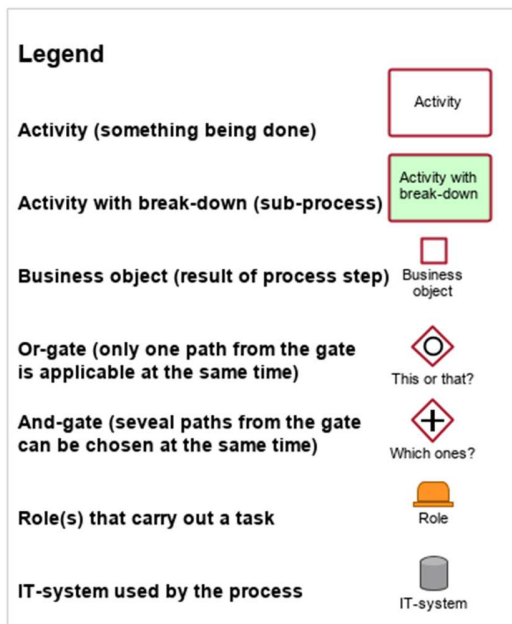
The first map represents the overall flow of the disruption process and the communication process described in the handbook. This map shows the total flow of the ICM process without too many details.

Some activities represent sub-processes (“break-downs”), since it would have been too complex to have all details in the main process map. These sub-processes are indicated by a green fill colour in the main process and can be found further down in the document. The title of each sub-process is shown in the upper left corner and corresponds to the activity shown in the main process. *Hint: Compare with the tree-structure in a file system where you have one main folder and a number of sub-folders within this.*

Since “allocation of capacity” described in the handbook is foreseen to be implemented at a later stage than the rest of the process, this part has been marked with a yellow colour in the main map. Please observe that there are three sub-processes for allocation of capacity corresponding to the three green activity boxes within the yellow box.

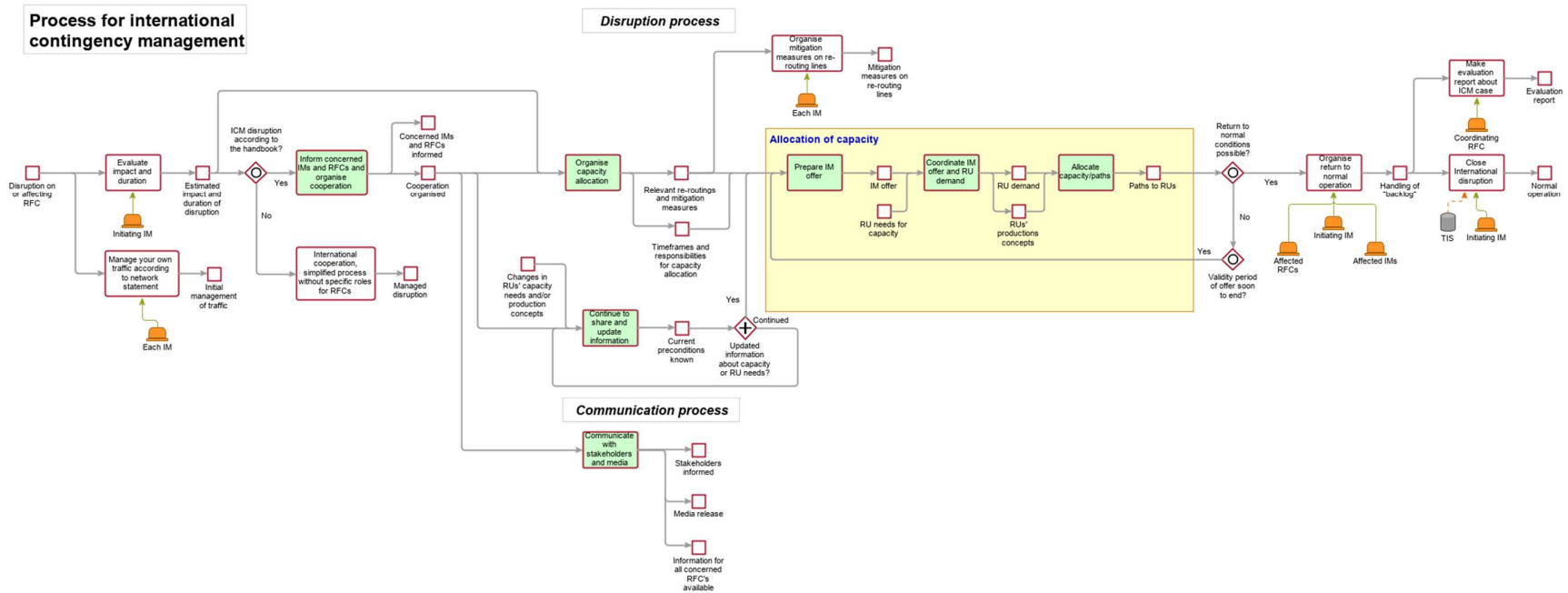
The arrows show the “flow” itself and thus the order in which the activities are normally being carried out. Parallel flows indicates that activities are carried out simultaneously or independent from each other.

Explanation of symbols used in process maps:



**Annex 11: ICM Process maps**  
**Update to be approved by High Level Group: RNE/RFC & TM & S&TT**

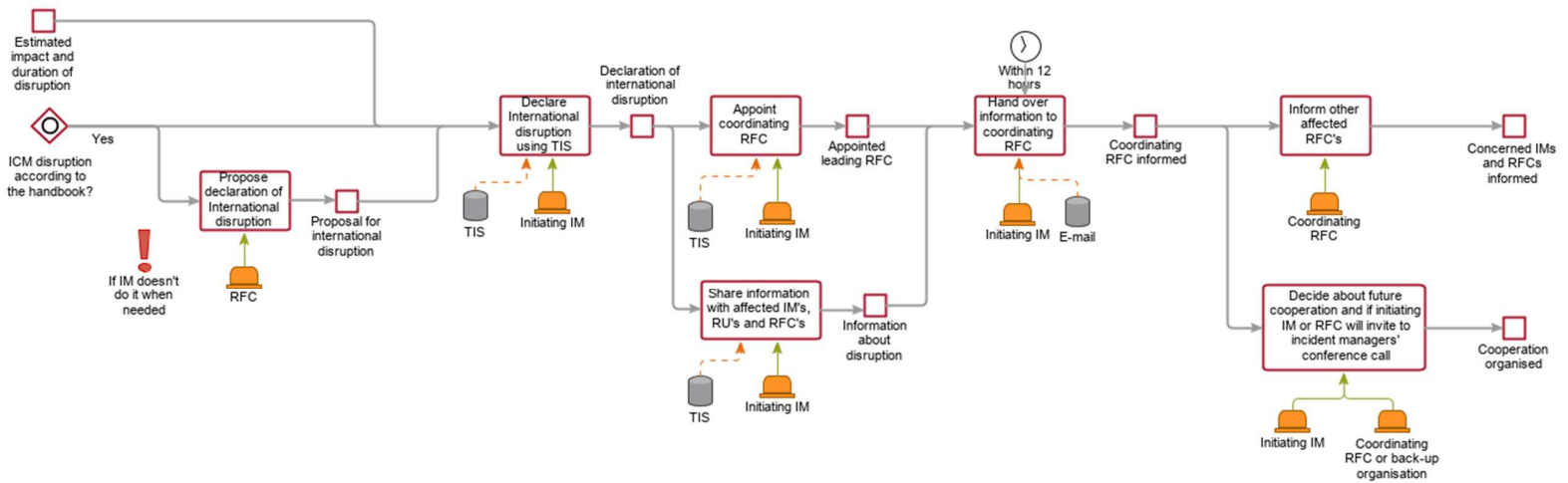
Version	Approved by	Date of approval
1.0	RNE General Assembly	May 2021



**Annex 11: ICM Process maps**  
**Update to be approved by High Level Group: RNE/RFC & TM & S&TT**

Version	Approved by	Date of approval
1.0	RNE General Assembly	May 2021

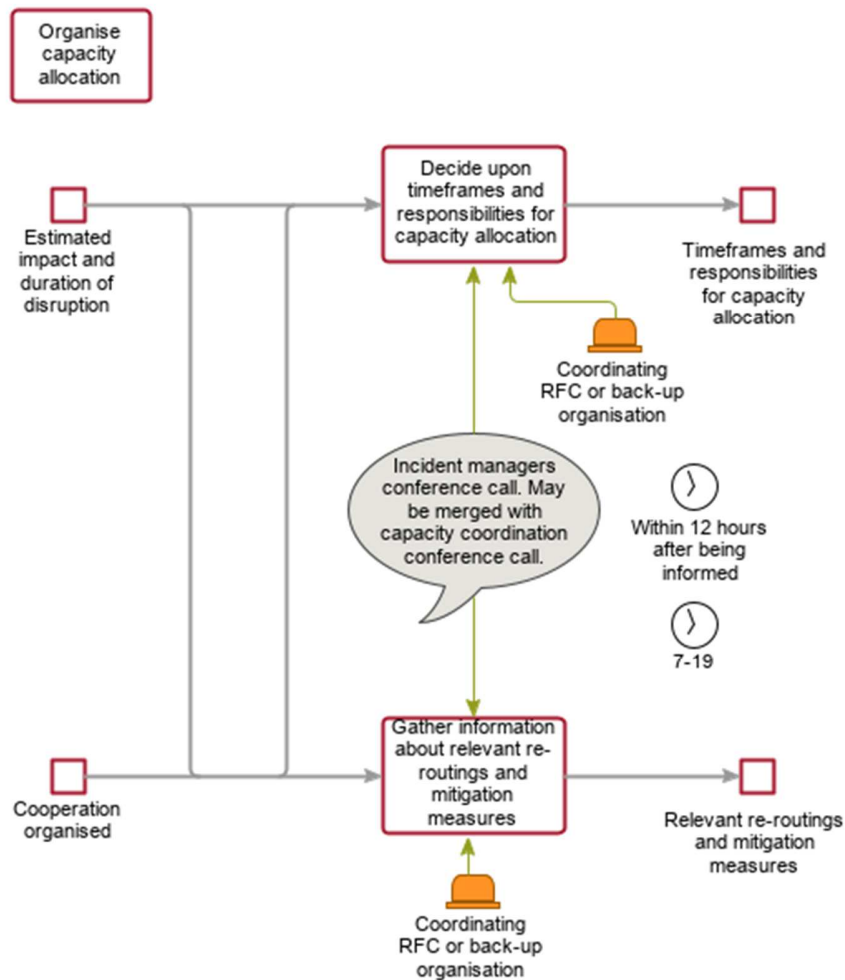
Inform concerned IMs and RFCs and organise cooperation



**Annex 11: ICM Process maps**

**Update to be approved by High Level Group: RNE/RFC & TM & S&TT**

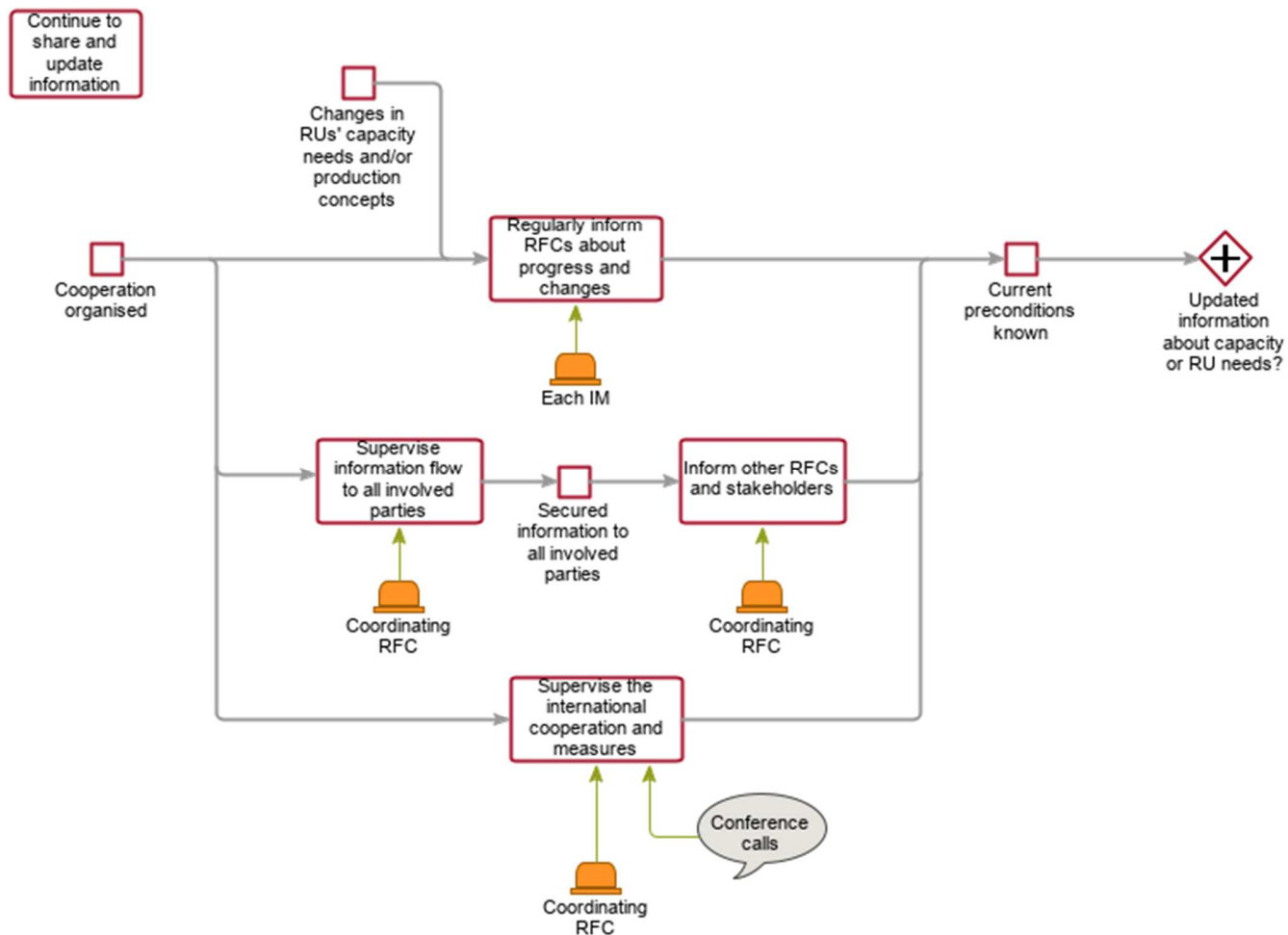
Version	Approved by	Date of approval
1.0	RNE General Assembly	May 2021



**Annex 11: ICM Process maps**

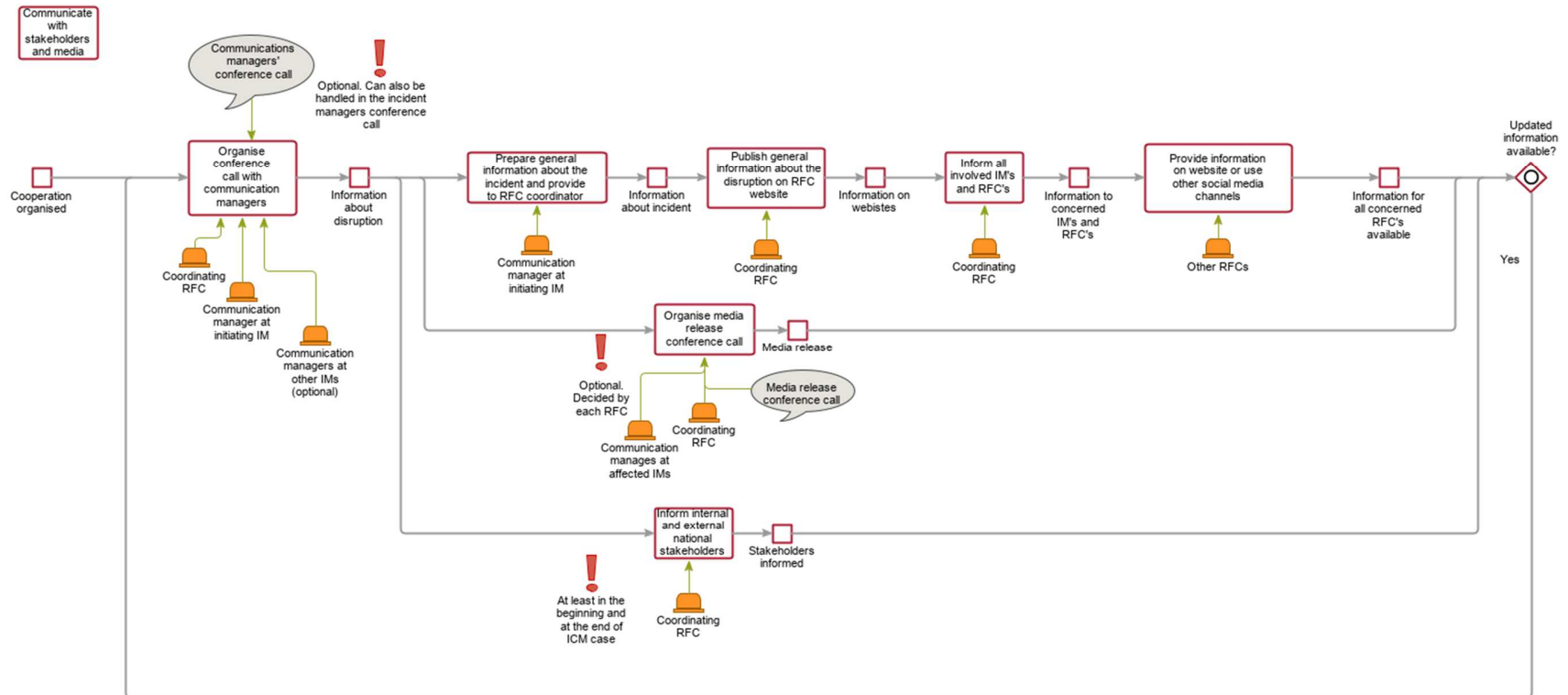
**Update to be approved by High Level Group: RNE/RFC & TM & S&TT**

Version	Approved by	Date of approval
1.0	RNE General Assembly	May 2021



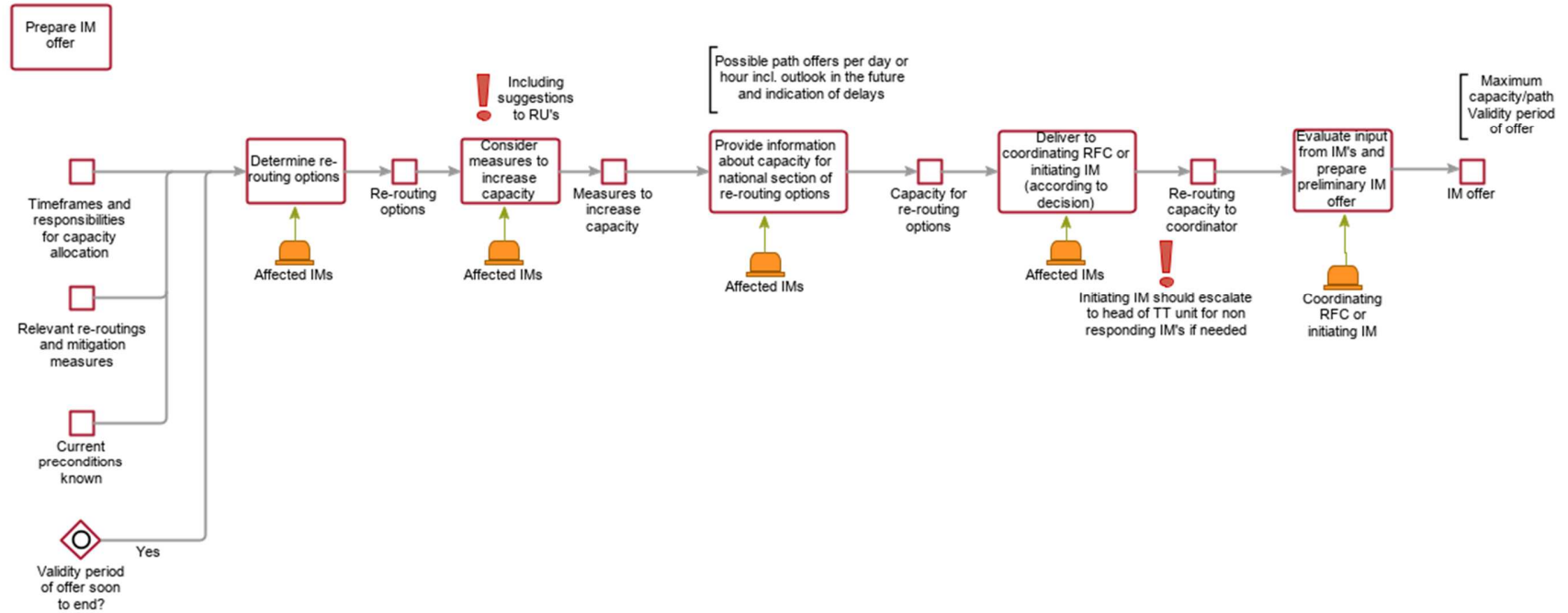
**Annex 11: ICM Process maps**  
**Update to be approved by High Level Group: RNE/RFC & TM & S&TT**

Version	Approved by	Date of approval
1.0	RNE General Assembly	May 2021



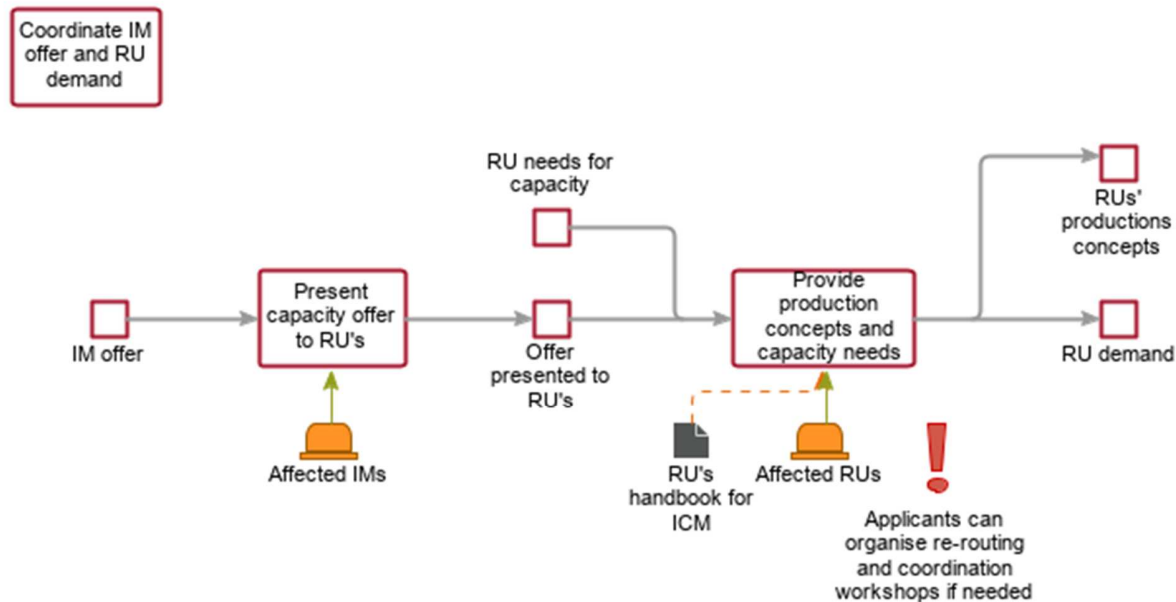
**Annex 11: ICM Process maps**  
**Update to be approved by High Level Group: RNE/RFC & TM & S&TT**

Version	Approved by	Date of approval
1.0	RNE General Assembly	May 2021



**Annex 11: ICM Process maps**  
**Update to be approved by High Level Group: RNE/RFC & TM & S&TT**

Version	Approved by	Date of approval
1.0	RNE General Assembly	May 2021





**Annex 11: ICM Process maps**  
**Update to be approved by High Level Group: RNE/RFC & TM & S&TT**

Version	Approved by	Date of approval
1.0	RNE General Assembly	May 2021

